



MONTHLY MEMBERSHIP PROGRESS REPORT

District 321A2

Results as of: 1/31/2015

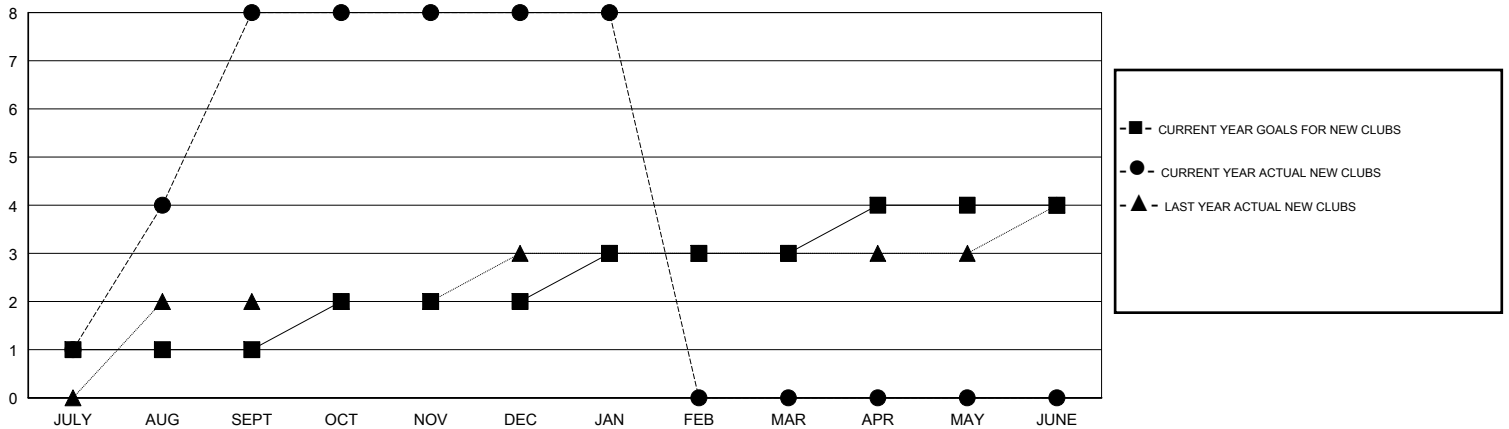
GMT: V S Kukreja

LOCATION INDIA

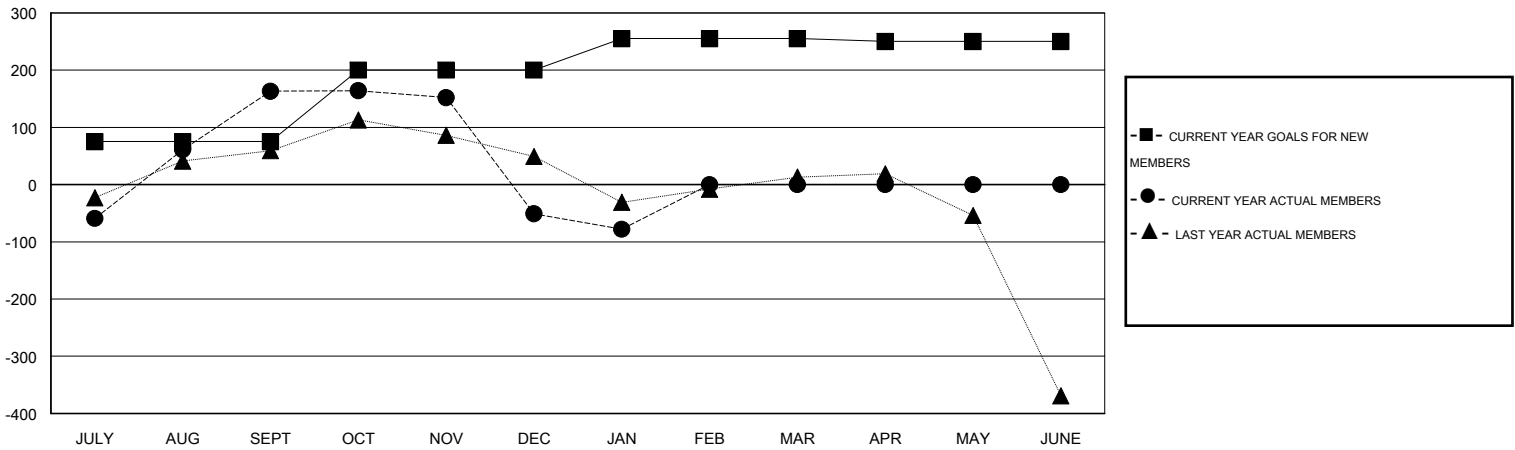
GMT CA 6

| Clubs | | | | | Members | | | | |
|-----------------------|---------------|-----------|---------------|---------------|-----------------------|-----------------|-------------------------------|-----------------|---------------|
| RESULTS FOR 2014-2015 | | | | | RESULTS FOR 2014-2015 | | | | |
| QUARTER | NEW CLUB GOAL | NEW CLUBS | DROPPED CLUBS | NET GAIN/LOSS | QUARTER | NEW MEMBER GOAL | CHARTER AND NEW MEMBERS ADDED | DROPPED MEMBERS | NET GAIN/LOSS |
| JULY/AUG/SEPT | 1 | 8 | 2 | 6 | JULY/AUG/SEPT | 75 | 308 | 145 | 163 |
| OCT/NOV/DEC | 1 | 0 | 7 | -7 | OCT/NOV/DEC | 125 | 52 | 266 | -214 |
| JAN/FEB/MAR | 1 | 0 | 1 | -1 | JAN/FEB/MAR | 55 | 40 | 67 | -27 |
| APR/MAY/JUNE | 1 | 0 | 0 | 0 | APR/MAY/JUNE | -5 | 0 | 0 | 0 |

GOALS AND ACTUAL NEW CLUBS CUMULATIVE



GOALS AND ACTUAL MEMBERS CUMULATIVE



| | | | |
|------------------------|---|----------------------------|---------------------|
| DROPPED CLUBS: 10 | 41 CLUBS OF 93 ADDED 1 OR MORE NEW MEMBERS | <u>GENDER DISTRIBUTION</u> | |
| | | MALE | 1,953 (67.65%) |
| <u>DROPPED MEMBERS</u> | CLICK HERE FOR HEALTH ASSESSMENT DATA | FEMALE | 934 (32.35%) |
| DECEASED | | 3 | FAMILY UNIT MEMBERS |
| CLUB CANCELLED | 202 | HEAD OF HOUSEHOLD | 817 |
| OTHER | 273 | NON-HEAD OF HOUSEHOLD | 976 |
| TOTAL | 478 | | |